

Versa Virtual Lab Infrastructure

Overview

Versa virtual lab is available for participants on a subscription basis. The V-VLAB is a virtualized Versa Secure SD-WAN environment that can be used for training, learning, or testing Versa Networks functions in a controlled, pre-built environment. The lab environment can be used for personal learning, exploring the Versa Networks ecosystem, and for completing or re-doing the tasks associated with Versa Networks training course lab guides and exercises.

Refer to the applicability matrix to understand which self-pace courses are compatible with this lab.

Versa Virtual Lab 1 [V-VLAB1] applicability

V-VLAB1 can be used with the following self-paced courses. Relevant lab guides are downloadable from respective course.

- Versa Secure SD-WAN Practitioner
- Versa Secure SD-WAN Administration

Lab infrastructure

Each node in SD-WAN is a VOS™ CPE node running as a virtual machine. Each node has an out-of-band management interface (Eth0), 2 WAN facing interfaces (vni-0/0 and VNI-0/1), and 1 LAN facing interface (VNI-0/2).

- A complete headend (Versa Director, Versa Analytics, and Versa Controller)
- 3 CPE nodes (2 branches and 1 hub, which can also be used as a branch CPE)
- 2 CPEs with a shared LAN for dual-site connectivity (a cross-connect interface is pre-configured between devices)
- 2 Linux-based testing hosts for traffic generation and connectivity verification
- 2 transport domains (MPLS and INET)

Most configurations, monitoring, and troubleshooting is performed from the Director user interface, with exception of some shell and CLI commands that are to be run on each node. The Hub node is pre-configured as hub. The same can be modified by students.

Students mustn't delete eth0 IP address [the OOB address] as doing so will result in the loss of node connection.

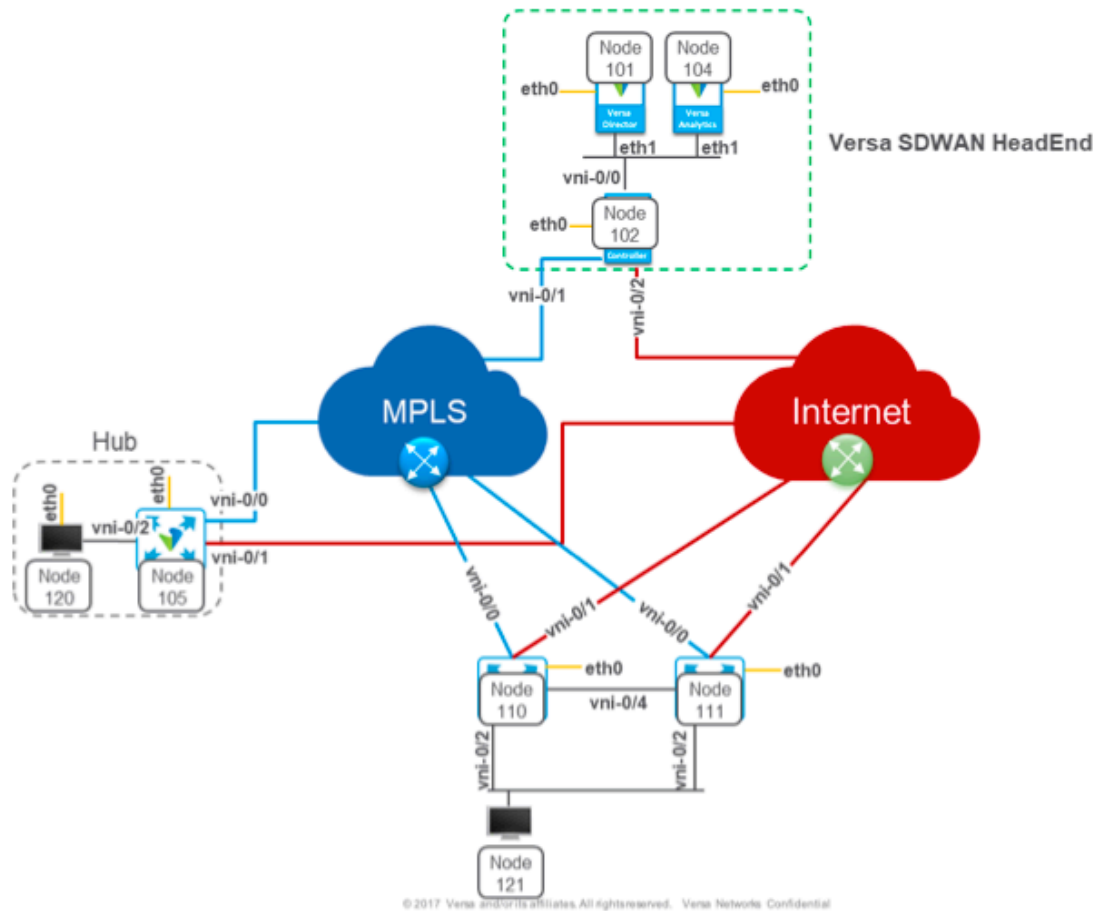
IP Addressing schema used in the lab

The out-of-band management interface address is in the 192.168.99.x/24 network. The last octet (.x) is the same value as the node number. OOB address should be modified or deleted as they will result in lost connection to lab nodes.

Similarly, the node number is used as the last octet of both WAN network IP addresses.

Please refer to the relevant lab guides for IP details.

Lab topology



Accessing your lab

Versa is providing the lab service in partnership with Toolwire. Upon subscription, you will be receiving an email from “donotreply@toolwire.com,” containing instructions on setting up and accessing the lab environment. It may take up to two hours to get the lab ready.

Step 1.1

From the web browser on your computer, connect to the following web address:

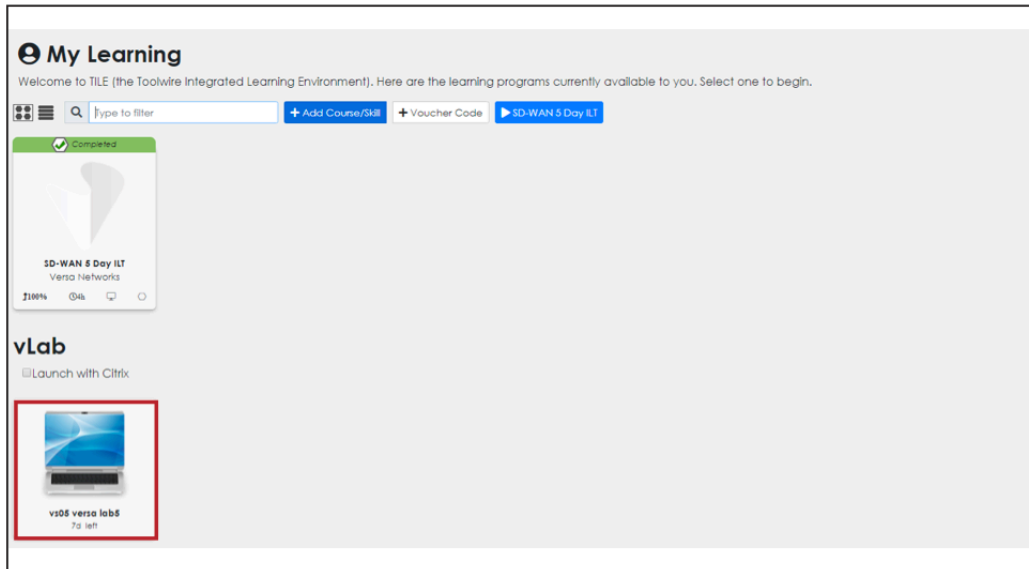
<https://dcm.toolwire.com/alai/admin/login.jsp?r-p>

Step 1.2

Enter your login credentials for the training lab and click Login. Your credentials should have been sent to you via E-mail with your lab registration information.

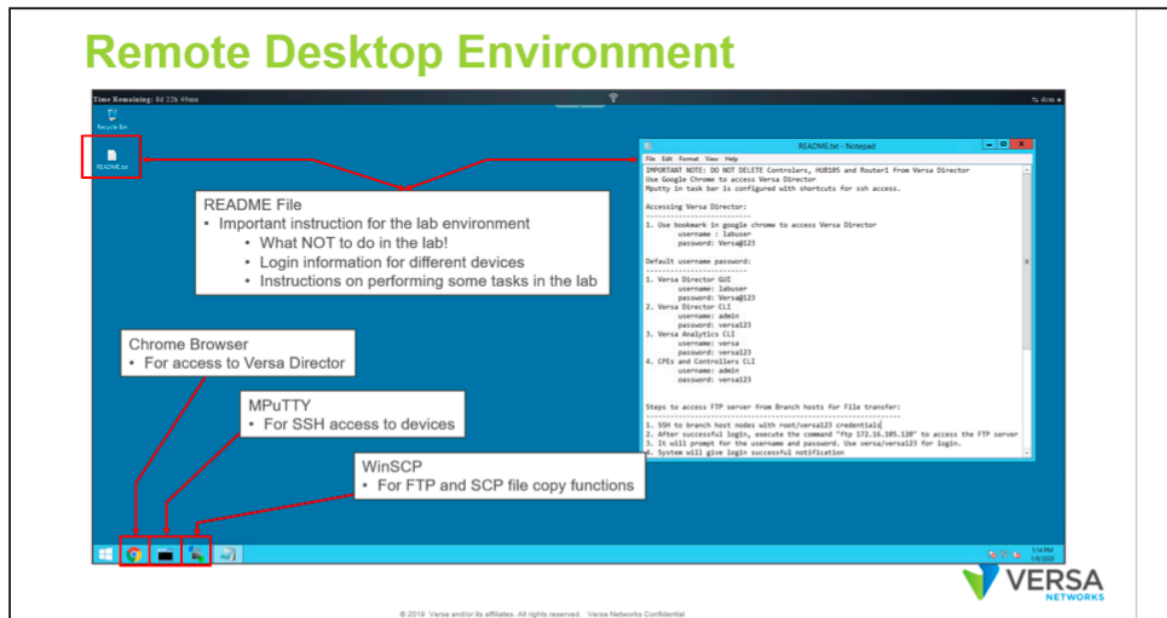
Note: If you have not received your login credentials, please email e-learning@versa-networks.com and support@toolwire.freshdesk.com from your registered ID. Please note, if you have already used Toolwire, then you can use the same ID.

You should have access to the lab portal which will look something like below:



Step 1.3

Enter the lab environment (remote desktop) by clicking on the vLAB icon. Once the remote desktop starts, you will be presented with several icons. The image below describes the icons:

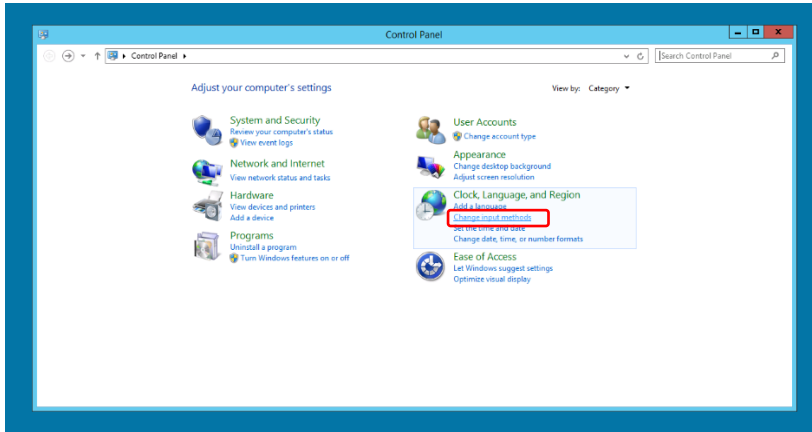


Please refer to the README.txt for access details. For support related queries, reach out to support@toolwire.freshdesk.com

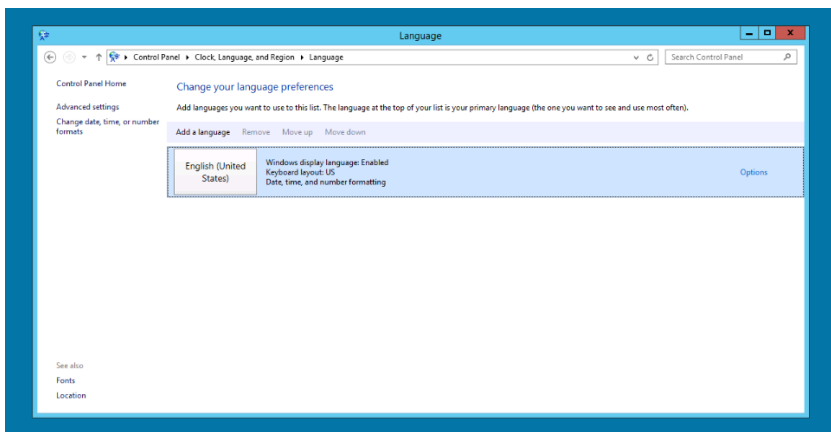
Keyboard setup on remote desktop

The remote desktop is configured with US keyboard layout. Participants can change the layout as required. Refer to the procedure below for changing keyboard layout.

Step1: Access the Control Panel and click on “Change input methods”



Step 2: Under “Change your language preferences,” click Options



Step3: Select the desired keyboard and click Add. Now you can use the keyboard setup throughout the session

