

Versa Secure SD-WAN Configuration and Administration (V-SDCA)

Course Overview

This five-day course is designed to provide participants with an understanding of Versa Networks Secure SD-WAN solutions, and the fundamentals of configuration and administration of a Versa Networks Secure SD-WAN deployment. It includes fundamental instruction on network overlays and underlays, routing, and the different SD-WAN topologies. It provides instruction on the Versa Networks components Versa Director, Versa Analytics, and Versa OS (VOS)™, and the building blocks of configuration: Workflows, Templates, and Service Templates.

The course puts these concepts into practice with step-by-step, hands-on lab exercises which allow participants to gain conceptual and practical knowledge and skills in the configuration, deployment, basic administration, and monitoring of a Versa Secure SD-WAN environment.

This course is based on VOS 16.1-R2-S10.

Course Objectives

- Describe the benefits of an SD-WAN solution
- Describe the components of the Versa Networks Secure SD-WAN solution
- Describe the features and functions of each component of a Versa Networks Secure SD-WAN
- Configure and deploy a Versa Networks Secure SD-WAN with the following features and functions:
 - Full Mesh topology
 - Spoke to Hub Only topology
 - Spoke to Spoke via Hub topology
 - Spoke to Spoke Direct topology
 - Workflows and template creation/management
 - Routing and redundant LAN functionality (multi-homed sites)
 - Routing policy
 - Class of Service
 - Traffic Steering (policy-based forwarding) and SLA monitoring
 - Basic security features

Course Length

5 Days

Target Audience

This course is designed for engineers who plan, implement, and service Versa Secure SD-WAN or vCPE networks. Target roles include Systems Engineers, Network Engineers, Field Engineers, Technical Support personnel, Channel partners and resellers.

Course Prerequisites

Participants should have a basic to intermediate level knowledge of IP networking, routing fundamentals, routing protocols, and basic IPsec and encapsulation/tunneling concepts.

Additionally, it is recommended that participants complete the Versa Essentials online course, although this is not required.

Course Content

Day 1	Day 2	Day 3	Day 4	Day 5
Course Introduction	Workflows and Templates Lab: Workflows and Templates/ Deploying Devices	High Availability Lab: Configure High Availability	Traffic Steering and SLA Monitoring Lab: Configure Traffic Steering and SLA Monitoring	Versa Service Templates Lab: Configure Service Templates Lab: Comprehensive Lab
Introduction to Versa Secure SD-WAN	Versa Routing Lab: Configure Versa Routing	Class-of-Service Lab: Configure Class-of-Service	Versa Security Services Lab: Configure Versa Security Services	
Versa Overlay Networks	Spoke-to-Hub Only Lab: Configure Spoke-to-Hub Only			
Versa Director User Interface Lab: Versa Director User Interface	Spoke-to-Spoke via Hub Lab: Configure Spoke-to-Spoke via Hub			
	Spoke-to-Spoke Direct Lab: Configure Spoke-to-Spoke Direct			

Delivery Options

5-day Instructor Led Training (ILT) or Instructor Led Online (ILO)

Course includes soft copies of the student guides and lab guides (protected PDF) and a limited printing capability.

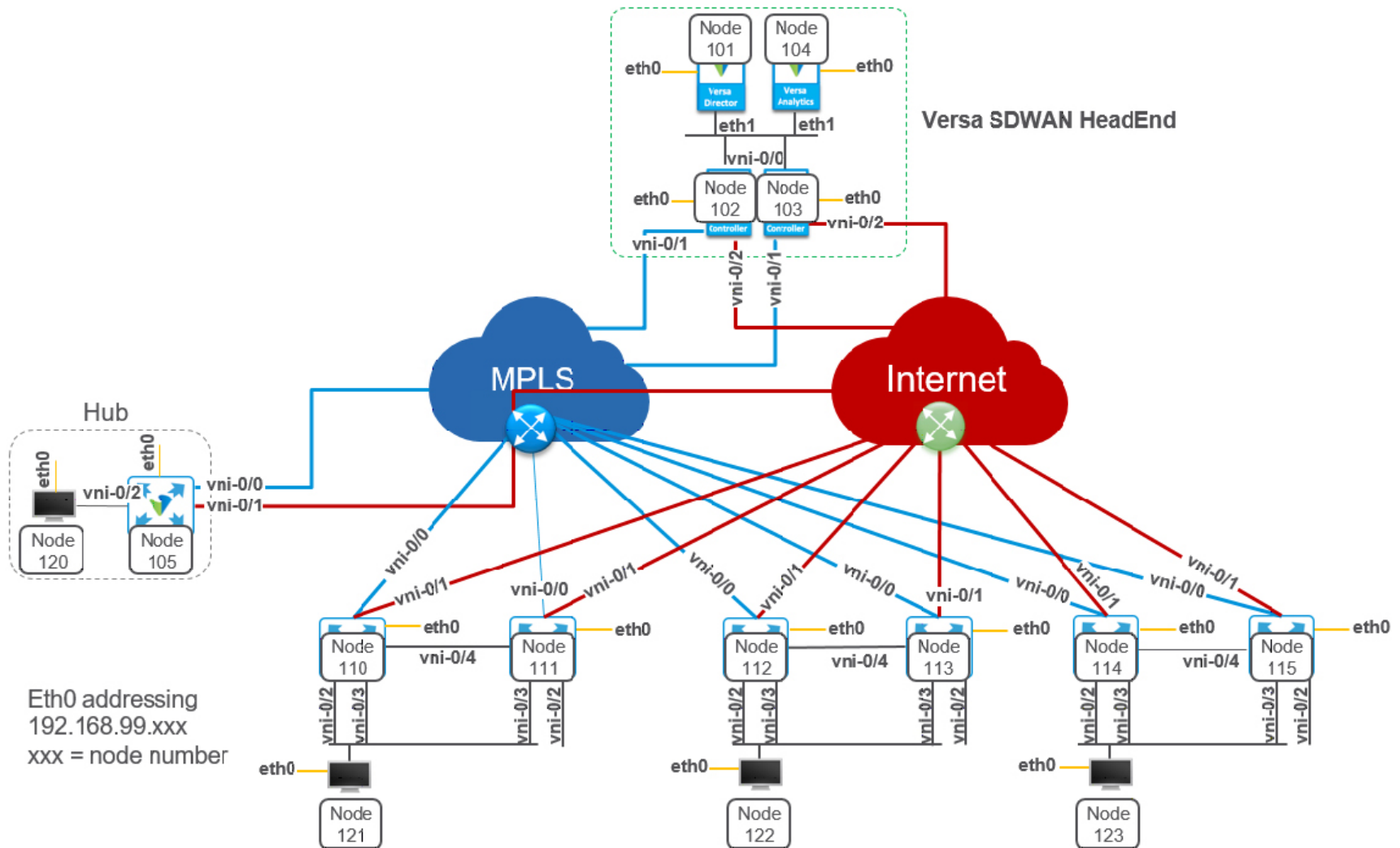
Lab Overview

The labs in this course provide hands-on instruction in the use of Versa Director for configuration and monitoring of an SD-WAN environment, including using Versa Director, creating device templates using Versa Workflows, deploying CPE devices, configuring and monitoring standard routing functions and policies, class of service, traffic steering and SLA monitoring, branch high-availability, basic security services, and service templates.

Lab Topology Type: Shared

Number of Lab Exercises: 12

Lab Topology



Eth0 addressing
 192.168.99.xxx
 xxx = node number